

INDEX

SHEET NO.	SUBJECT
1	Reinforced Concrete Bridge Approach Index and General Notes
2	Reinforced Concrete Bridge Approach Square
3	Reinforced Concrete Bridge Approach Skewed
4	Reinforced Concrete Bridge Approach Section, Pavement Ledge, and Bar Bending Details

GENERAL NOTES:

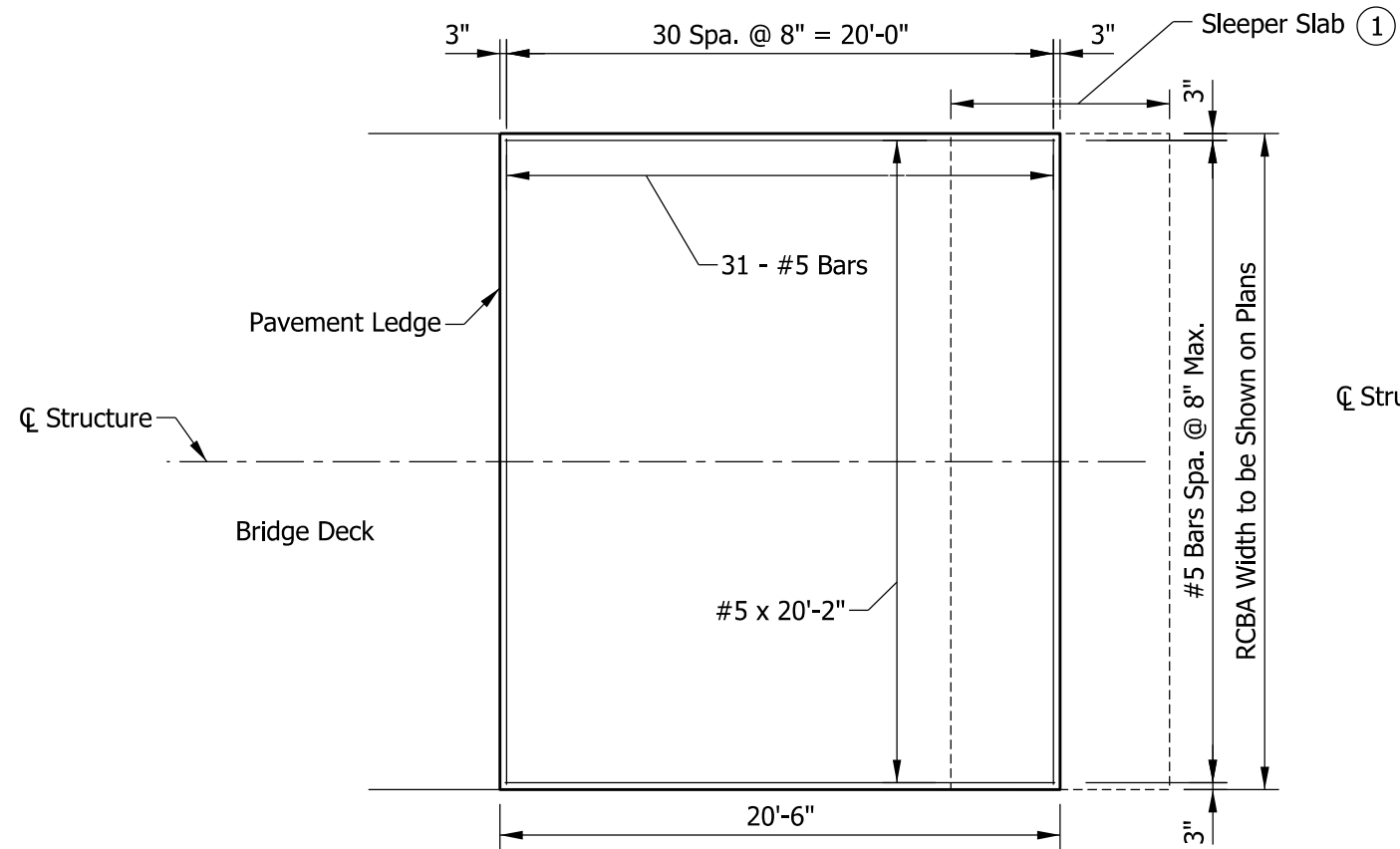
1. All reinforcing bars shall be epoxy coated.
2. See Standard Drawing series E 609-TBAE for RCBA extensions used with bridge railing transitions.
3. RCBA shall be surface sealed.

INDIANA DEPARTMENT OF TRANSPORTATION

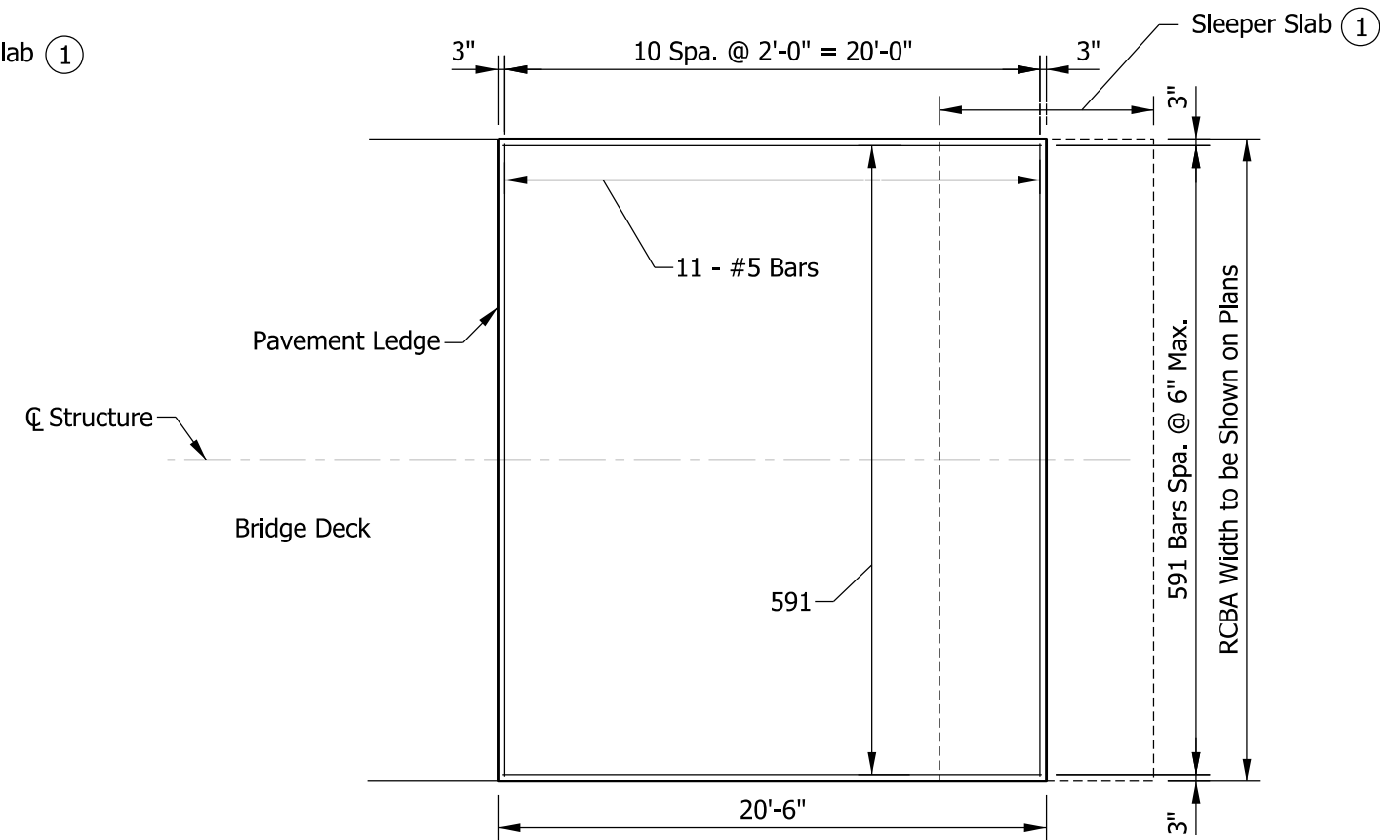
REINFORCED CONCRETE BRIDGE APPROACH
INDEX AND GENERAL NOTES

NOTES:

- ① When shown on plans, see Standard Drawing series E 503-BATJ for terminal joint and sleeper slab details.



PLAN SHOWING TOP REINFORCING

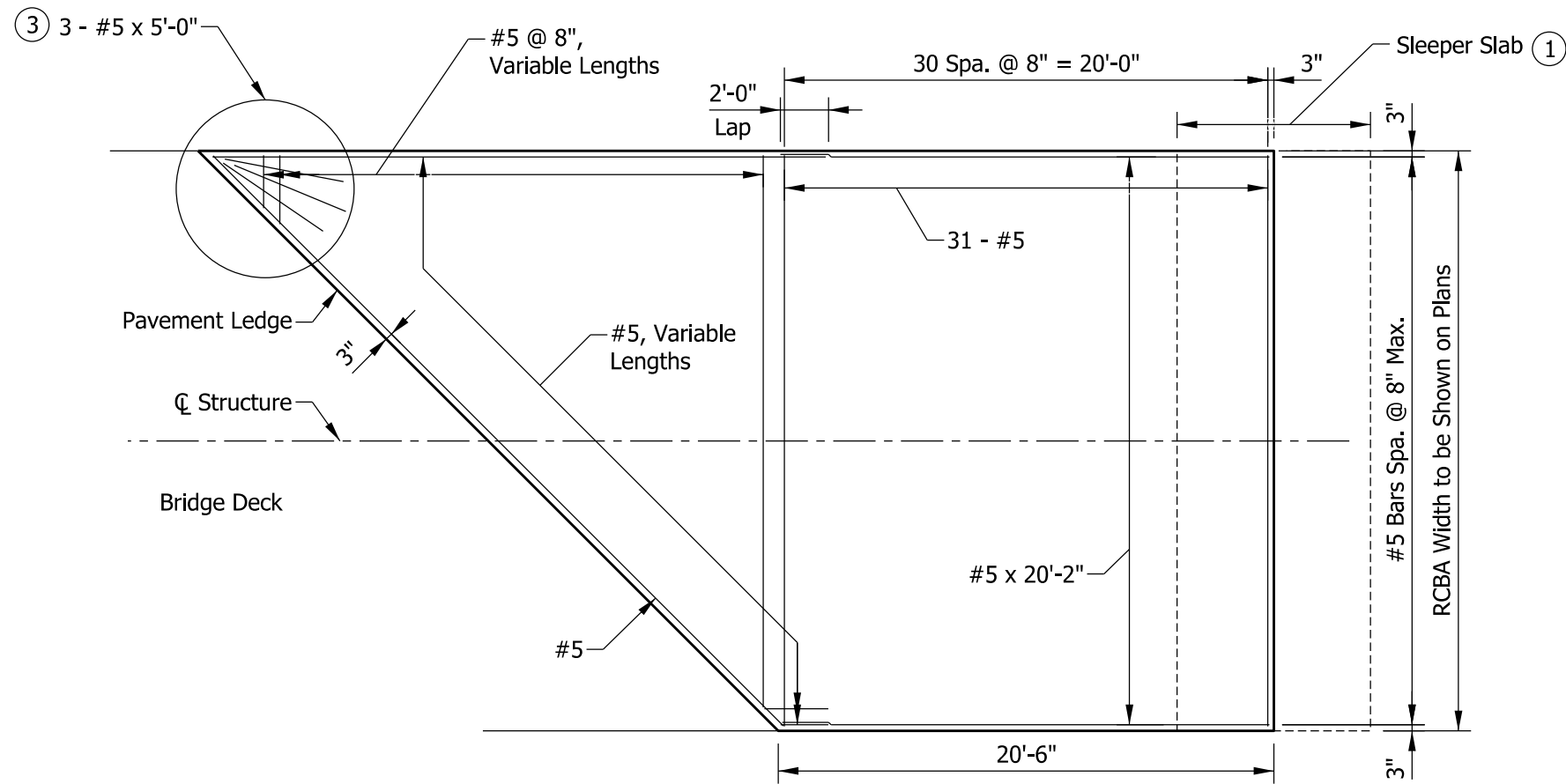


PLAN SHOWING BOTTOM REINFORCING

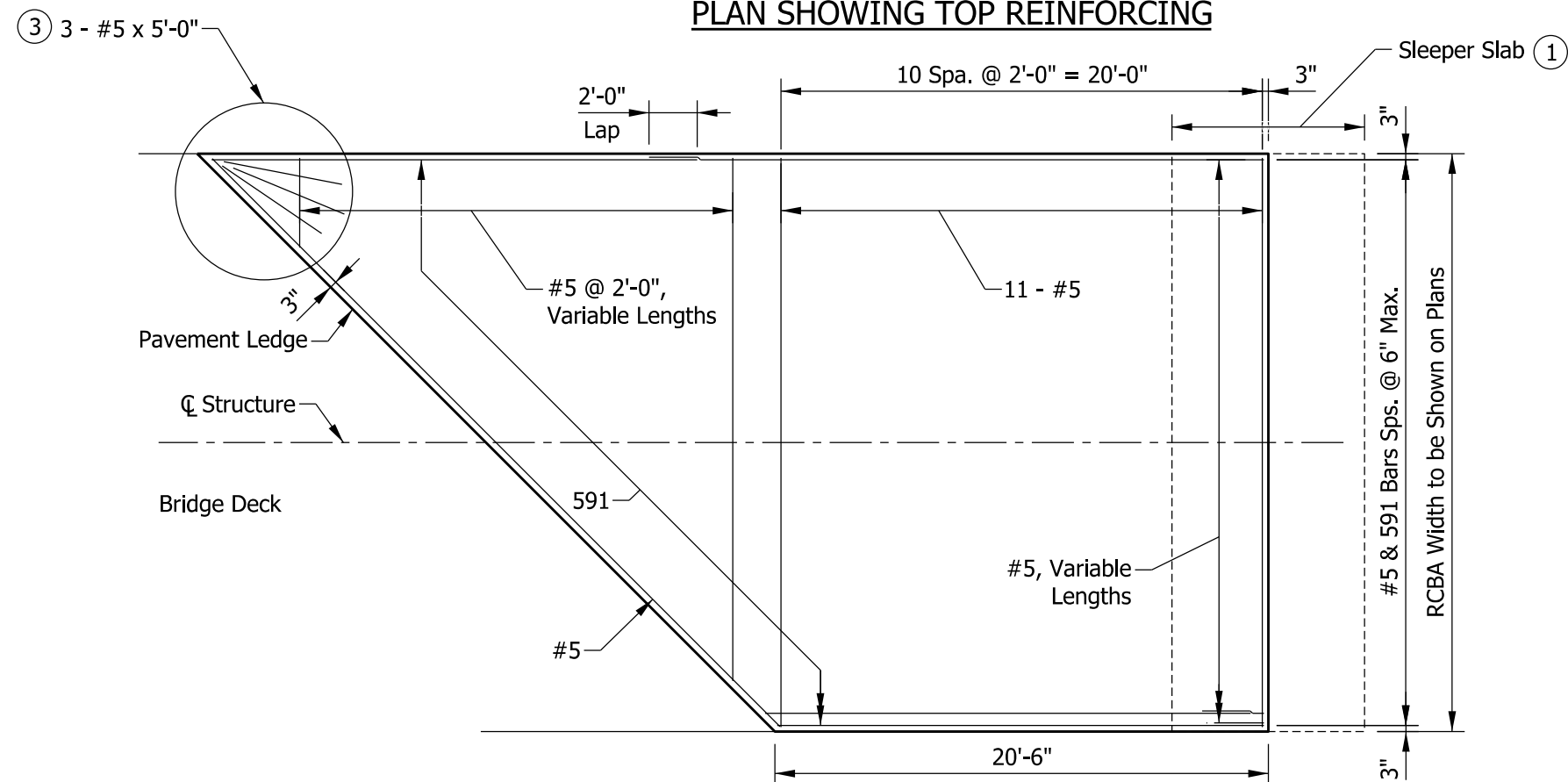
KEY:

RCBA = Reinforced Concrete Bridge Approach

INDIANA DEPARTMENT OF TRANSPORTATION
REINFORCED CONCRETE BRIDGE APPROACH SQUARE



PLAN SHOWING TOP REINFORCING



PLAN SHOWING BOTTOM REINFORCING

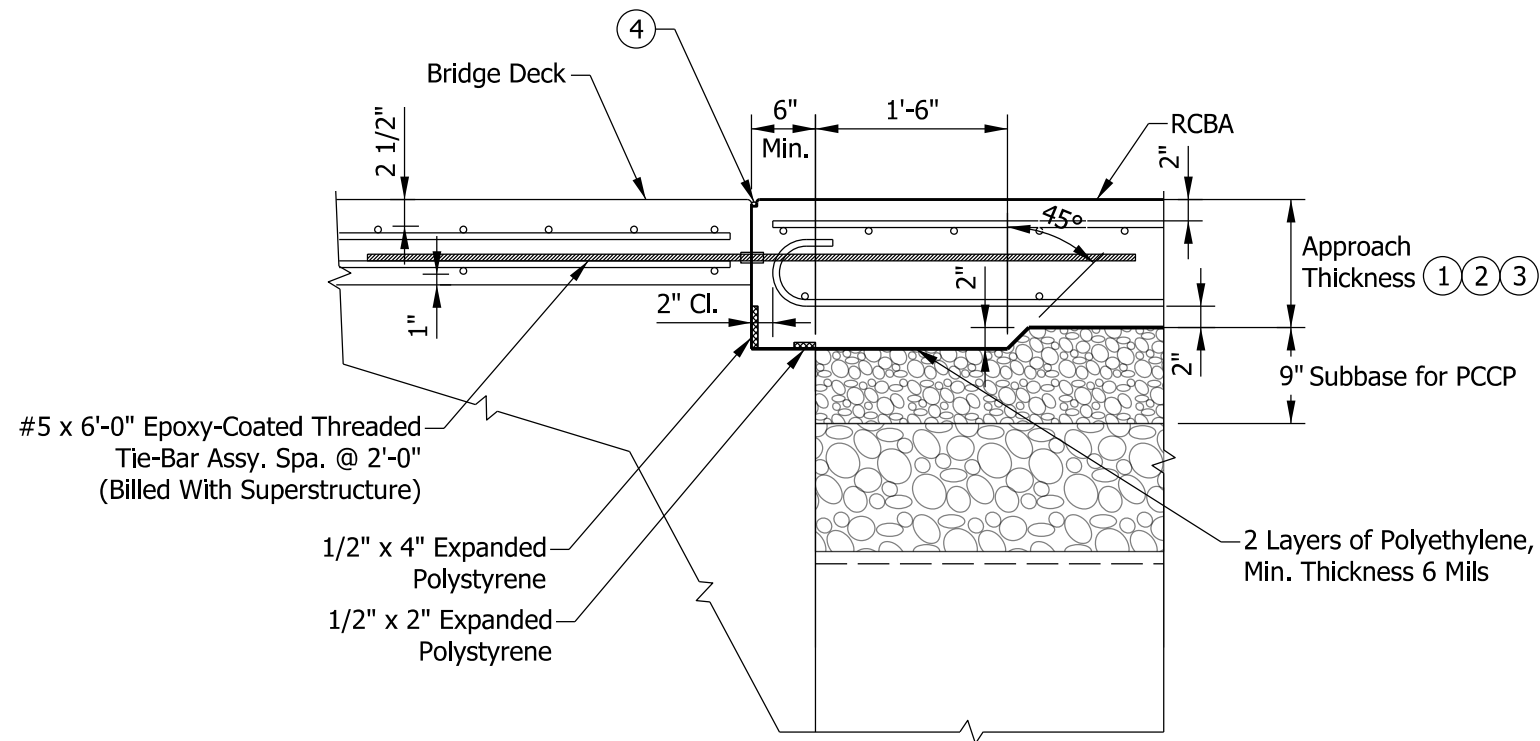
NOTES:

- ① When shown on plans, see Standard Drawing series E 503-BATJ for terminal joint and sleeper slab details.
- 2. Variable-length #5 bars shall be detailed by means of cutting diagrams on the plans.
- ③ For skew > 15° where variable-length transverse bars would be shorter than 2'-0", a fanned configuration of three #5 x 5'-0" reinforcing bars shall be provided.

KEY:

RCBA = Reinforced Concrete Bridge Approach

INDIANA DEPARTMENT OF TRANSPORTATION
REINFORCED CONCRETE BRIDGE APPROACH SKEWED



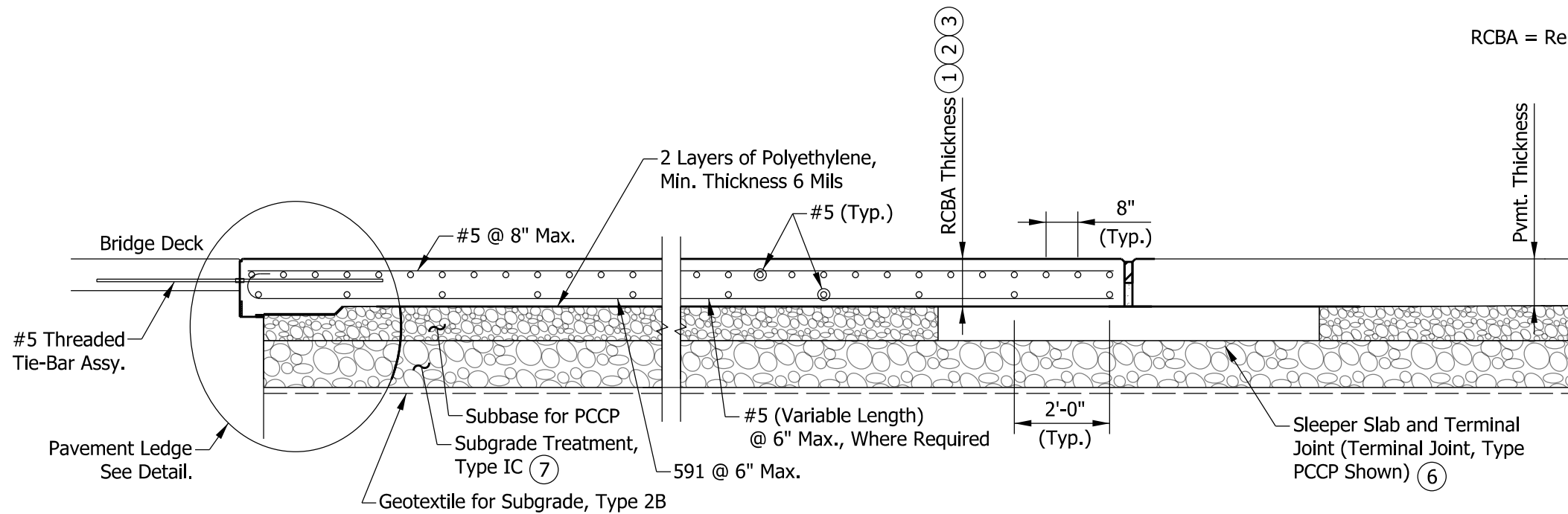
PAVEMENT LEDGE DETAIL

NOTES:

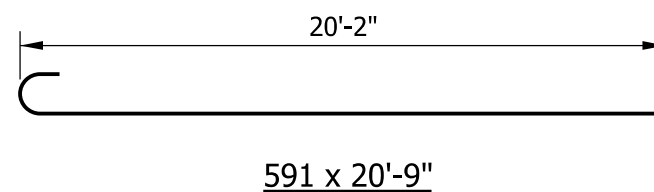
- ① See plans for approach thickness.
- ② For HMA pavement:
10 in. if design year AADT < 1000
12 in. if design year AADT ≥ 1000
- ③ For PCCP:
12 in. if pavement thickness < 12 in.
Same as pavement thickness, if pavement thickness ≥ 12 in.
- ④ Joint type I-A. See Standard Drawing E 609-BRJT-01 for details.
- 5. See Standard Drawing E 703-BRST-01 for reinforcing-bar bending details and notes.
- ⑥ When shown on plans, see Standard Drawing Series E 503-BATJ for terminal joint and sleeper slab details.
- ⑦ When the RCBA is constructed without a terminal joint, subgrade treatment shall be omitted and geotextile shall be placed under subbase for PCCP.

KEY:

RCBA = Reinforced Concrete Bridge Approach Pavement



SECTION THROUGH APPROACH



INDIANA DEPARTMENT OF TRANSPORTATION

REINFORCED CONCRETE BRIDGE APPROACH SECTION, PAVEMENT LEDGE, AND BAR BENDING DETAILS